

GILLIS
12/17/56

8/11



Govt. Lot 3

Govt. Lot 2

33
1/4 Cor.

S. 42° 15' E. 275.65'

253.42'

124.49
S. 45° 11' E.

331.55'

S. 42° 25' E.

341.00'

16

16

20

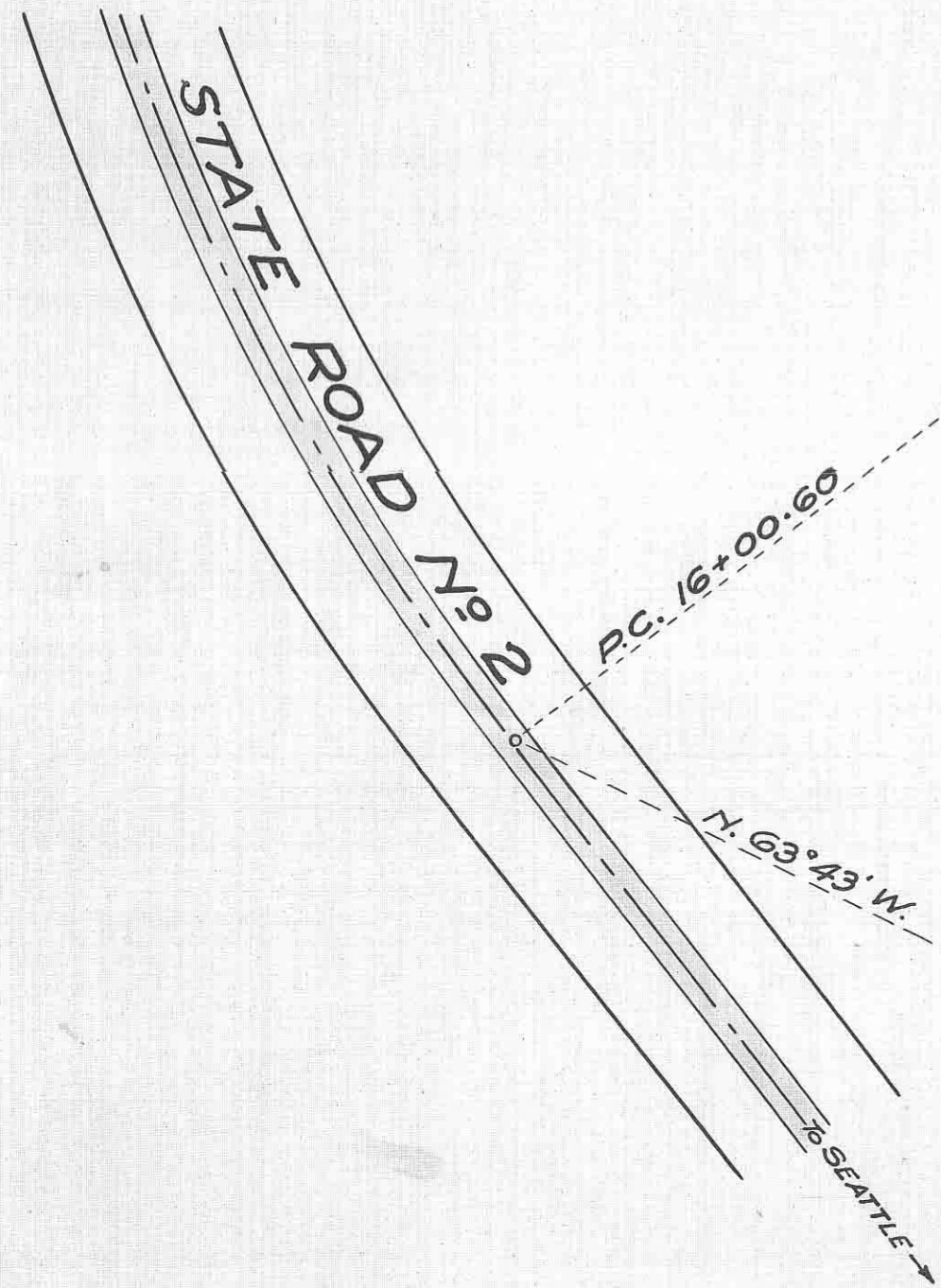
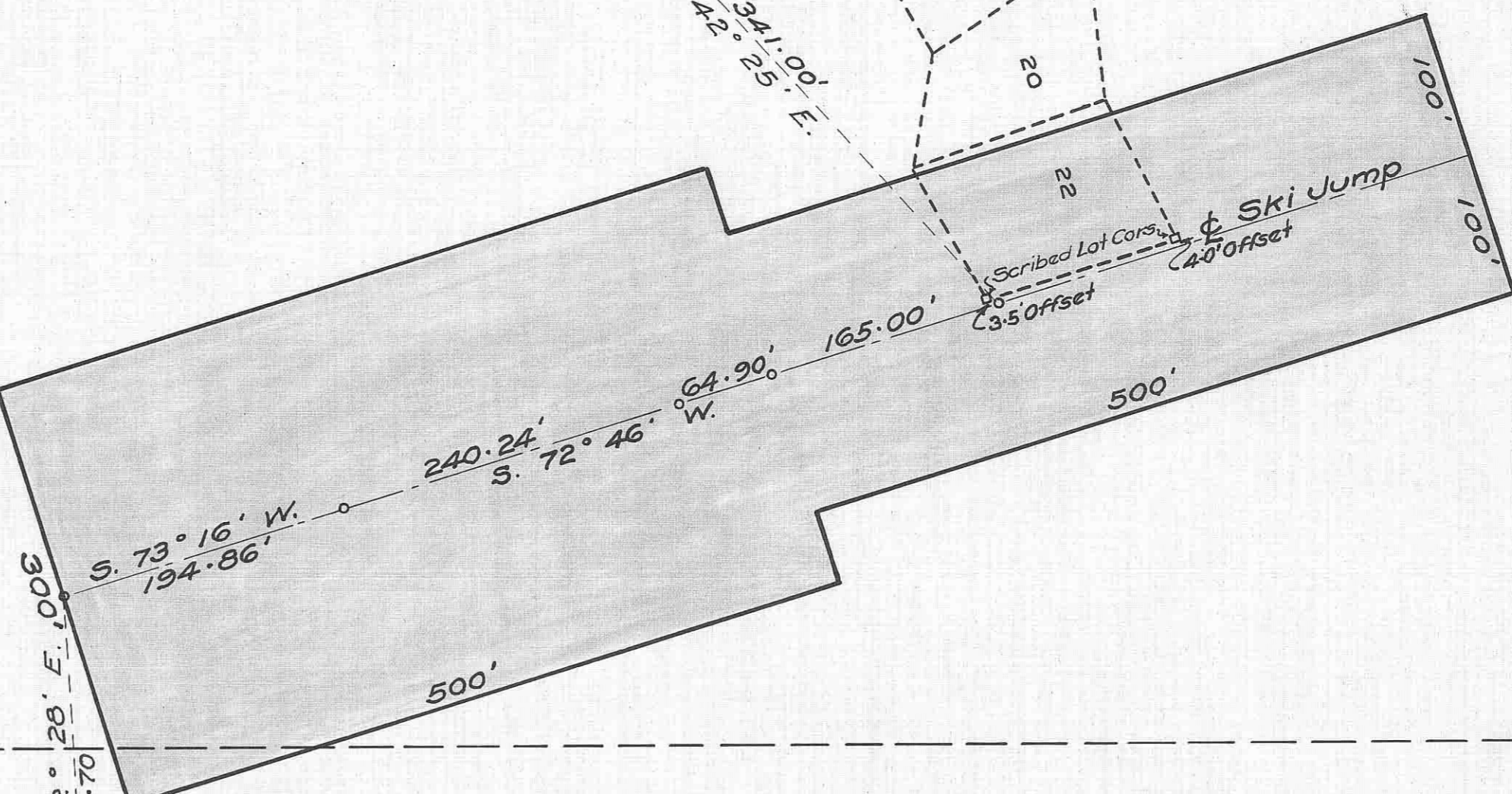
22

Scriber Lot Cont.

Ski Jump

4.5' Offset

4.5' Offset



SE 1/4 of NW 1/4

SW 1/4 of NE 1/4

SECTION 4 TWP. 22 N. R. 11 E. W. M.

ADOPTED BY THE BOARD OF KING COUNTY COMMISSIONERS
SEATTLE, WASHINGTON, 19____
ATTEST: _____ DEPUTY CLERK CHAIRMAN

KING COUNTY ENGINEER'S OFFICE
JOSEPH P. DODD, COUNTY ENGINEER
SKI JUMP & PARKING AREA
SNOQUALMIE PASS SUMMIT
COMMISSIONER'S DISTRICT NO. 3
SURVEY No. 4-22-11-1 SECONDARY ROAD PROJECT No. _____
SHEET _____ OF _____ SHEETS
SCALE: HOR. INCH = 100 FT. VER. INCH = 10 FT.
APPROVED BY: _____ COUNTY ENGINEER
PRIN. ASST. COUNTY ENGINEER



ANNEXED

SCANNED 1856 14-47-41

74-41